

User manual



KR-S80-A

Preface

Dear Customers:

























Thanks for choosing card cabinet lock offered by Kerong Industry (HK) Co ., Limited . Please read this 《User Manual 》 carefully before using.

Thanks for your kind understanding and support!

Contents

1. Product	1
2. Product Appearance	2
2.1 Lock body.....	2
2.2 Lock hook.....	2
2.3 Card.....	2
2.4 Screws.....	2
2.5 External power supply.....	3
3. Product Installation Dimensions	4
4. Installation Drawings	6
5. Product Functions	7
5.1 Functions & Features.....	7
5.2 Parameters.....	7
6. Operations	9
6.1 Public Mode	9
6.1.1 Mode introduction.....	9
6.1.2 Set lock into public mode.....	10
6.1.3 Set manager card.....	10
6.1.4 Set user card.....	10
6.1.5 How to use user card.....	10
6.1.6 Set delete card.....	10
6.2 Private Mode	11
6.2.1 Mode introduction.....	11
6.2.2 Set lock into private mode.....	11
6.2.3 Set manager card.....	12
6.2.4 Set user card.....	12
6.2.5 How to use user card.....	12
6.2.6 Set delete card.....	12
6.3 Limited Public Mode	13
6.3.1 Mode introduction.....	13
6.3.2 Set lock into limited public mode.....	13
6.3.3 Set manager card.....	13
6.3.4 Set user card.....	14
6.3.5 How to use user card.....	14
6.3.6 Set delete card.....	14
7. Reset Lock	15
8. Warm Tips	15

1. Relative Products

<p>B panel</p>  	<p>C panel</p>  	<p>D panel</p>  	<p>E panel</p>  
<p>F panel</p>  <p>30mm</p> 	<p>G panel</p>  <p>65mm</p> 	<p>64RF panel</p>  <p>64mm</p> 	<p>36SF panel</p>  <p>36mm</p> 
<p>51SF panel</p>  <p>51mm</p> 	<p>51SF-FM panel</p>  	<p>64RP panel</p>  	<p>64RP-FM panel</p>  

S80 lock body



2. Product Appearance

2.1 Lock body

Material: ABS

Size: 80*80*27mm



2.2 Lock hook

Different hook types suit for various application

Hook A suits for both vertical and horizontal installation

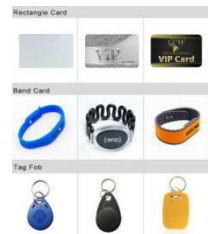
Hook D and Hook E suit for horizontal installation



2.3 Card

Different shapes of cards available:

wrist band, tag fob, rectangle card and so on.



2.4 Screws

Suitable screws for different material cabinets

(wooden/metal) and different door thickness.

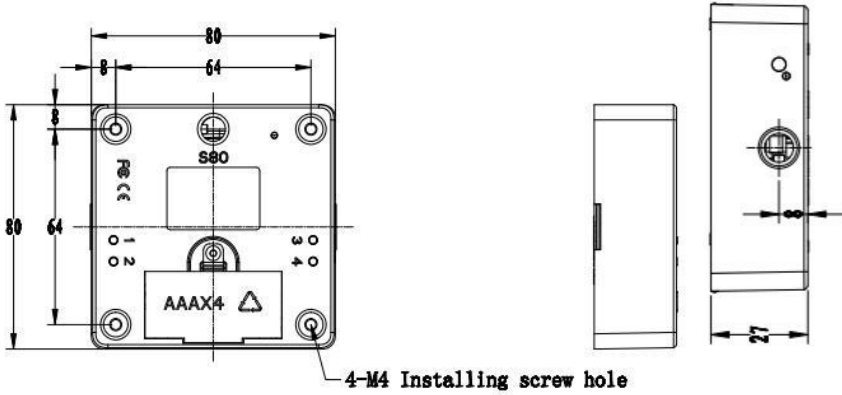


2.5 External power supply

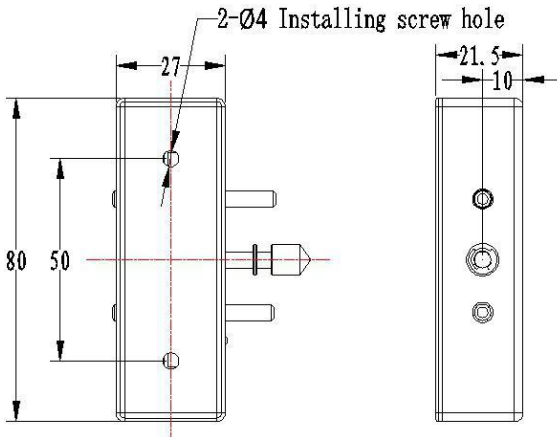
With external battery box and power adaptor to work with lock body or front panel for emergency power supply.



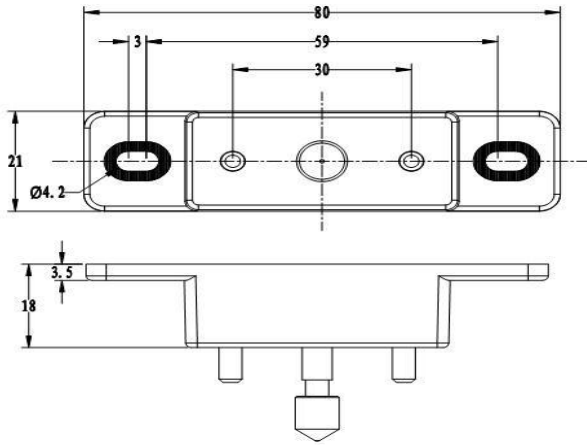
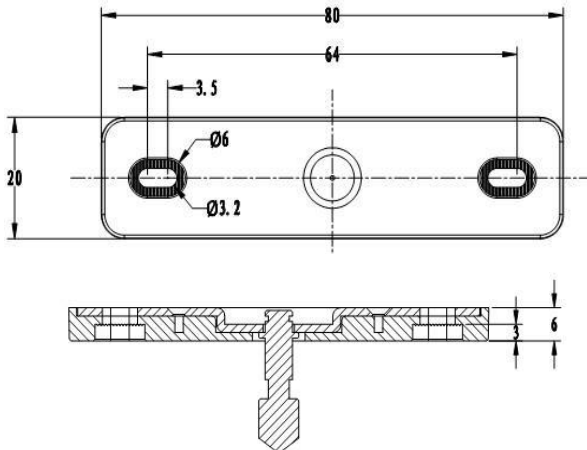
3. Product Installation Dimension



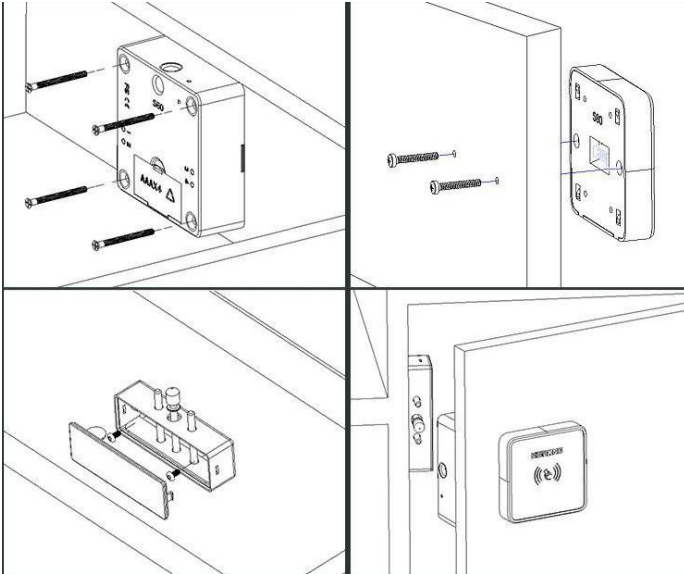
Lock body



Hook A

**Hook E****Hook**

4.Installation Drawing



5. Product Functions

5.1 Parameters

Material	ABS for lock body shell, Acrylic & PC for panel
Power consumption	Static power consumption <100uA
	dynamic power consumption<200mA
Working voltage	DC6V(4*AAA 1.5V)
	Batteries can standby for around 1 year
Working environment	Working temperature -15°C ~ +65°C
	Working humidity 10% ~ 90%RH
Anti-static	Air static 15KV
	Touch static 8KV

5.2 Functions & Features

Functions	Features
Sound prompt	Lock will prompt with sound when swipe correct/wrong card, battery is in low voltage, unlocking for a long time
Light prompt	Green: correct operation Red: wrong operation Blue: low voltage White: standby status
	Low voltage alarm: 1. When battery's voltage is lower than 4.5V, light will shine in blue and lock sounds "di di" on every opening or alarm automatically when lower than 4.5V to remind user change new batteries

Alarm functions	2. When voltage is less than 4V, lock can't be locked until change new batteries. 3. Lock can work normally 1000 times after low voltage warning
	<p>Lock status alarm:</p> 1. Lock will keep warning for 10s if it keeps unlocking status more than 30s. 2. ※ Lock status alarming function only exists in private mode. Press button 1+2 can enable/disable this function. 3. If you have a handset machine, you also can set a card to enable/disable this function.
	<p>Locking protection:</p> Input wrong code/card, lock will shine in red twice and prompt with “di di”. Wrong for 5 times continuously, lock will be unavailable for 5mins. During unavailable period: 1. Use manager card/code can make it available. 2. Input user code/card lock will prompt with “di di di di di” and light shines in red.
Card functions	1. Manager card: For setting user card, also can be used for emergency unlock in public mode. 2. User card: Only be used for unlocking. 3. Delete card: For deleting all user cards at one time, or delete a specific card. 4. Master card: For emergency unlocking.
Button functions	Button 1: Set manager card and user card. Button 2: Set delete card. Button 3: Change working mode. Button 4: Change to single key mode or double key mode. Reset: Reset the lock. If you don't want to set lock and card by these four buttons, we also can disable them, and set all with handset machine.
Functional cards	1. Change working mode by card. 2. Enable & disable lock status alarm function by card. 3. Enable & disable lock sound by card.

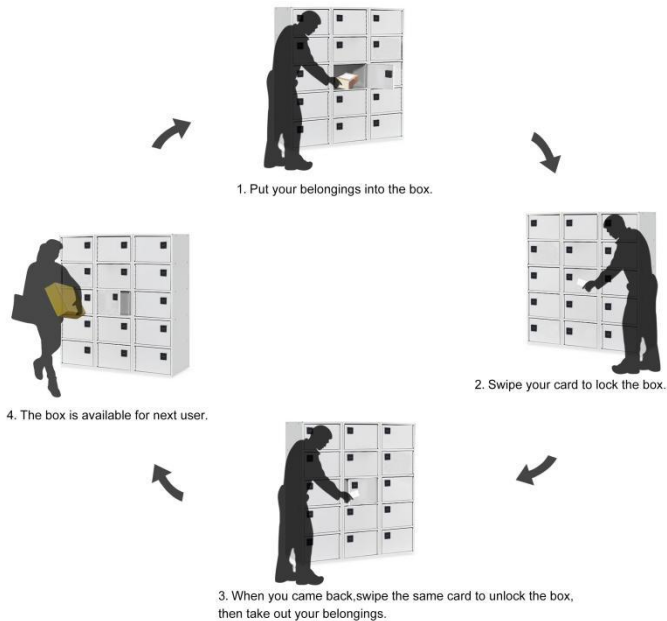
- 4. Function cards can be encrypted. Only these encrypted function cards can set the lock.
- 5. Users can use their own cards that are compatible with our lock, but function cards only can be Mifare 1 card.

6. Operations

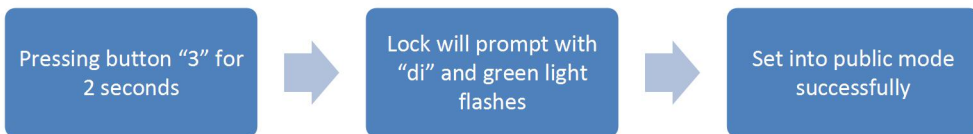
6.1 Public Mode

6.1.1 Mode introduction

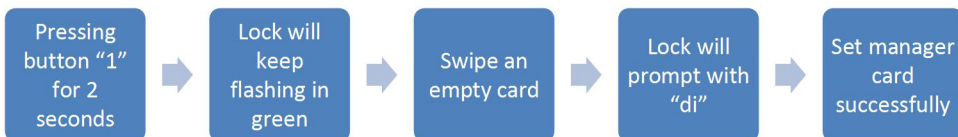
Lock keeps unlocking under public mode, manager card should be programmed first(manager card can use for emergency unlock). Any card to lock and same card to unlock.



6.1.2 Set lock into public mode



6.1.3 Set manager card



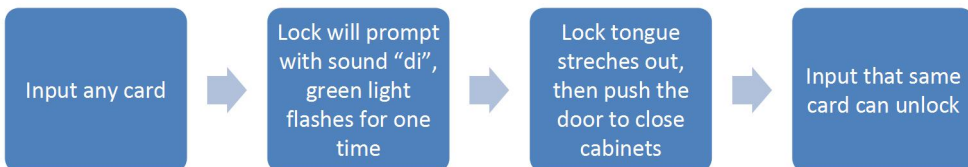
Notice:

1. While green light is flashing, user can set manager card continuously.
One lock can have max 10pcs manager cards.
2. Manager card can be used for emergency unlock in public mode.

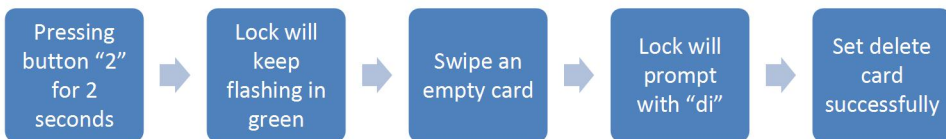
6.1.4 Set user card

※ In public mode, no need to set user card. Input any card can lock, then same card to unlock.

6.1.5 How to use user card



6.1.6 Set delete card



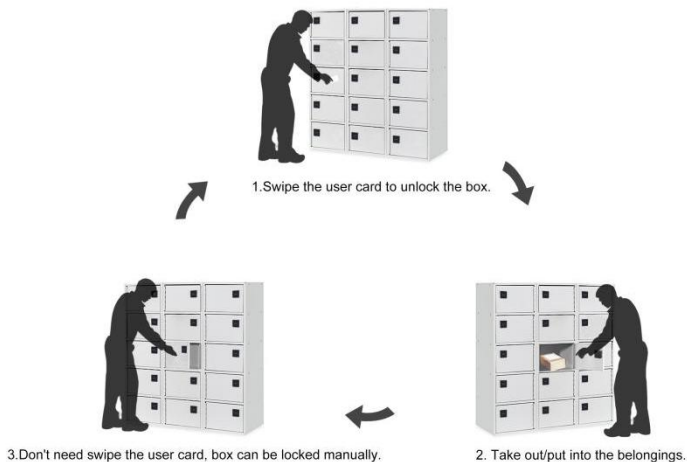
Notice:

1. While green light is flashing, user can set delete card continuously.
One lock can have max 10pcs delete cards.
2. Swipe the delete card, all user cards will be invalid, then need to set again.
3. If you want to delete one user card at one time, please let us know in advance.

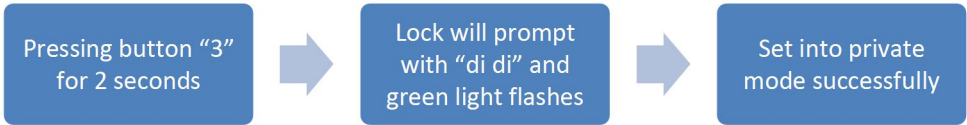
6.2 Private Mode

6.2.1 Mode introduction

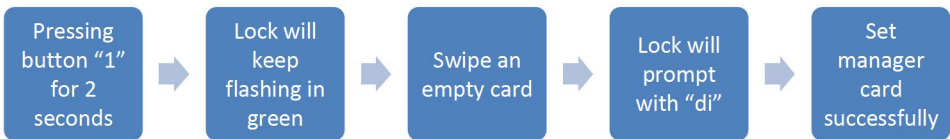
Lock keeps locking under private mode, manager card and user card should be programmed first(manager card only for programming user card). Push the door to close, and use the user card to unlock.



6.2.2 Set lock into private mode



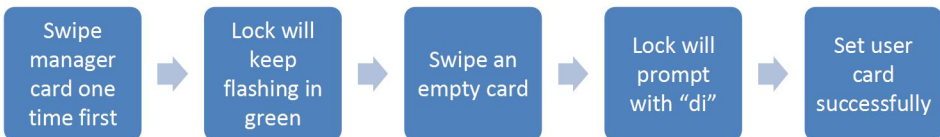
6.2.3 Set manager card



Notice:

1. While green light is flashing, user can set manager card continuously.
One lock can have max 10pcs manager cards.
2. Manager card cannot use for emergency unlock, just for setting user card.

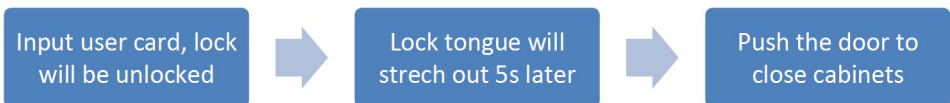
6.2.4 Set user card



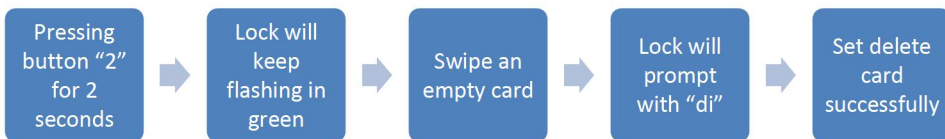
Notice:

1. While green light is flashing, user can set user card continuously.
One lock can have max 30pcs user cards.

6.2.5 How to use user card



6.2.6 Set delete card



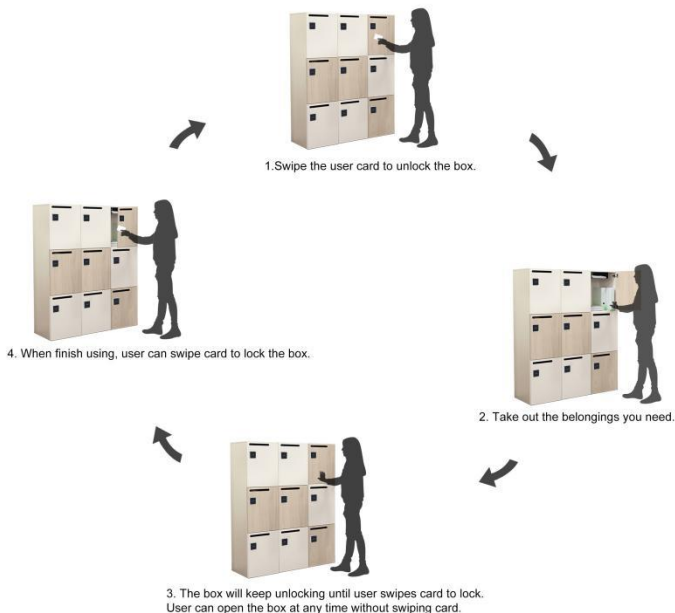
Notice:

1. While green light is flashing, user can set delete card continuously.
One lock can have max 10pcs delete cards.
2. Swipe the delete card, all user cards will be invalid, then need to set again.
3. If you want to delete one user card at one time, please let us know in advance.

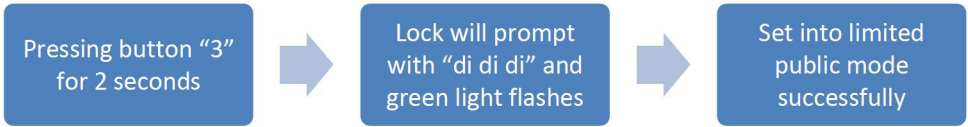
6.3 Limited Public Mode

6.3.1 Mode introduction

Lock keeps locking first under limited public mode, manager card and user card should be programmed first(manager card only for programming user card). Lock will keep unlocking after unlocked, then swipe user card, push the door can close the box.



6.3.2 Set lock into limited public mode



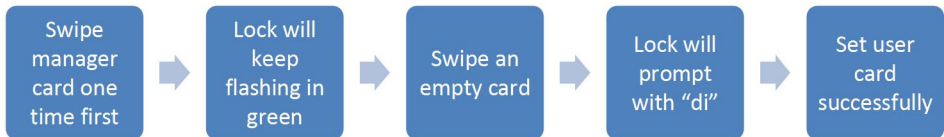
6.3.3 Set manager card



Notice:

1. While green light is flashing, user can set manager card continuously.
One lock can have max 10pcs manager cards.
2. Manager card cannot be used for emergency unlock, just for setting user card.

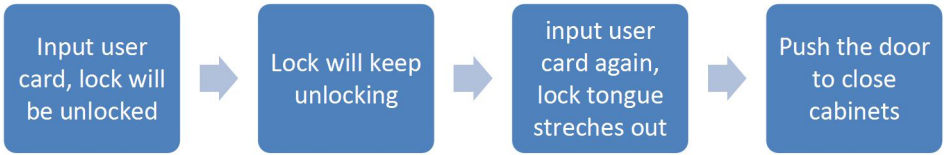
6.3.4 Set user card



Notice:

1. While green light is flashing, user can set user card continuously.
One lock can have max 30pcs user cards.
2. If user card is lost, you can use manager card to set a new user card to unlock.

6.3.5 How to use user card



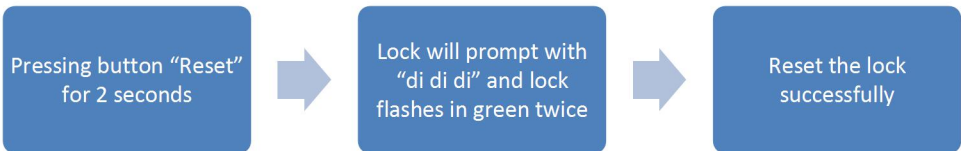
6.3.6 Set delete card



Notice:

1. While green light is flashing, user can set delete card continuously.
One lock can have max 10pcs delete cards.
2. Swipe the delete card, all user cards will be invalid, then need to set again.
3. If you want to delete one user card at one time, please let us know in advance.

7. Reset lock



Notice:

After resetting, the lock will be factory setting and all card are invalid, need to set cards again.

8. Warm Tips

1. Light shines in blue means batteries are nearly run out, please change new batteries in time.
2. One lock can have max 10pcs manager cards, 10pcs delete cards and 30pcs user cards.
3. Please make sure the lock can work, batteries are included and all CARDS are set before installation.



— **Technology Change Life** —

KERONG INDUSTRY (HK) CO., LIMITED

ADD: 2nd Floor, Tonghe Industry Park, Fuping North Rd Pingdi Street,
Longgang District, Shenzhen, Guangdong, China

Tel: 0755-28396063 Fax: +86-755-83117533

Website: www.kerong.hk

<http://szkerong.en.alibaba.com/>

Email: kr30@kerong.hk